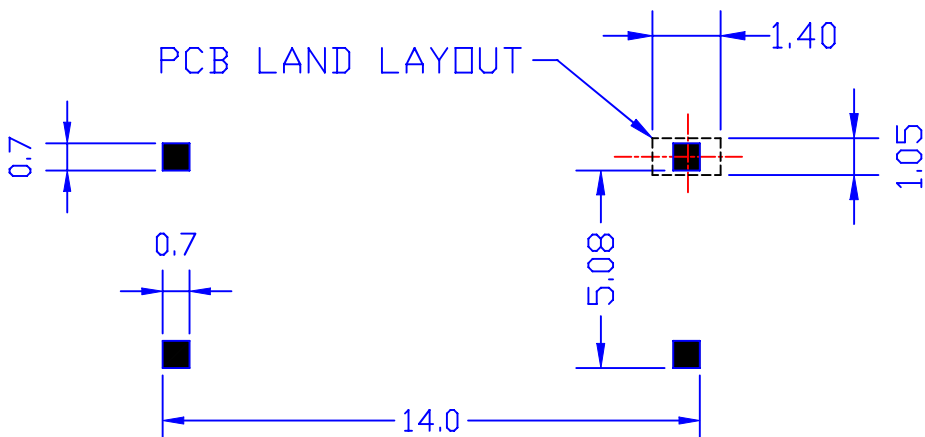


ELECTRICAL CHARACTERISTICS: (TRUE V.34 FOR SMT)

1. D.C.R. PIN 1-3 = 157 OHM +/-10% PIN 4-6 = 146 OHM +/-10%
2. INDUCTANCE (@250HZ, 0.5Vrms, PARALLEL) 1-3 = 3.5H MIN.
3. IMPEDANCE (@ 1KHZ, 0dBm, 6-4 W/H 346 OHM)
1-3 = 600 OHM +/-10%
4. INSERTION LOSS = 2.9 +/-0.1dB
(AT 1KHZ, 0dBm, W/H 346 OHM LOAD)
5. FREQ. RESP. (@ 300HZ TO 4KHZ, REF. 1KHZ) = +/-0.1dB
6. RETURN LOSS @300HZ = 25dB MIN. @1KHZ = 25dB MIN.
@4KHZ = 25dB MIN.
- 7 TURN RATIO = (@30KHZ,0.1V)1:1 +/-1%
8. POLARITY = PIN 1-6 INPHASE
9. LONGITUDINAL BAL. = 70dB MIN. (@ 200HZ TO 4KHZ)
10. T.H.D. (@600HZ, -10dBm) = -82dB MAX.
11. HI-POT = 1250 VAC, 1mA, 2SEC. (PRI.-SEC.)
12. INSULATION RESISTANCE : (@500VDC)
PRI.-SEC. = 100M OHM MIN.
13. RoHS COMPLIANT



UNLESS OTHERWISE SPECIFIED ALL TOLERANCES ARE ±0.25

							TITLE 600 : 346 TRANSFORMER	
							Atech Technology Co.. Ltd.	
					TEL:(02)2794-8667 FAX:(02)2794-8004			
RELEASE					UNITS:	SAFETY		SHEET 1 OF 1
NO.	DESCRIPTION	DATE	BY	CHK	APPD	DATE	P/N:	DRAW
REVISIONS								